



COME TOGETHER

STRATEGY 2022-2028

Come Together

IPPF is a global Federation. We are 120 independent organisations and Secretariat. We come together to provide care and promote rights. We are more than the sum of our parts. We provide all aspects of SRHR. We work with communities and movements. We are where others are not.

In our 70-year history, we have dared to stand for social justice. We have been brave; we have been angry. Today, we are as committed as ever to attaining the goal of SRHR for all in a just and equal world. And we do not stand alone. We know that SRHR is deeply intertwined with other global issues. We work alongside other sectors and actors, government and non-government, to improve the lives of our communities and to better our nations.

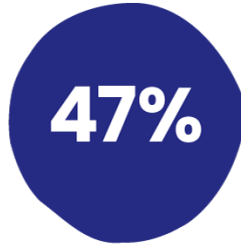
The world is changing, and fast. We see and feel the devastating impact of pandemics, climate change, migration, structural injustice, and growing inequality. The world is no longer knocking on our door, it has entered our homes and our lives. **The numbers are clear: our world is marked by global upheaval, division and inequality.** In this pivotal moment, we must accelerate our efforts and work to our strengths. We cannot sit on the fence. We must actively shape the new world that is being formed.

Everyone has the right to enjoy a fulfilled sex life. We need daring, feminist action to secure free choices about our bodies, sexual lives and well-being without shame, stigma or discrimination. **In the next 6 years, IPPF** will work to reach more people, in more places, through barriers and with allies. Together we will shape tomorrow – **in the care and choices we make, the change we push for, the connections we make, and the solidarity we foster.**

“IPPF is the leading international CYP provider in 89 of 120 countries. In 64 of those countries, we are the only international provider.”

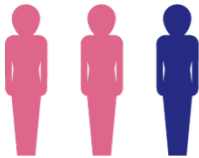
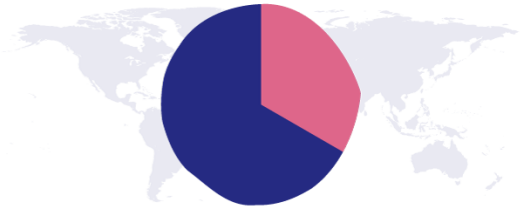
Future Clients

In 2030, Gen Z and Gen Alpha will represent 47% of the global population.¹



They will be the most diverse generations in terms of ethnicity, race, sexuality and gender identity.²

By 2030, two-thirds of IPPF clients will live in countries where inequalities have increased, with a growing proportion of inequality increase attributed to global warming/ the climate crisis.³



1 in 3 adolescents use the internet and this proportion will increase consistently over the coming decade.⁴

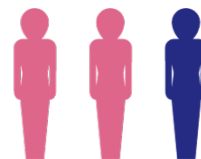
Humanitarian

There are currently an estimated 235 million people in need of humanitarian assistance.⁵ 34 million are adolescent girls and women.⁶



Sexual and Gender Based Violence

Worldwide, more than 1 in 3 women and girls have experienced physical and/or sexual violence from an intimate partner.⁷



Sexual and Reproductive Health

In 2020 there were around 1.5 million people newly infected with HIV, with adolescents accounting for 11%.⁸ The highest number of adolescents living with HIV are in Sub-Saharan Africa, Asia and Latin America.⁹



1, 2, 3 University of Cape Town and University of Oxford. 2022.

4 Keeley, B., & Little, C. 2017. The State of the World's Children 2017: Children in a Digital World. ERIC.

5 Global Humanitarian Overview 2021 | Global Humanitarian Overview (unocha.org).

6 United Nations High Commission for Refugees (UNHCR). Global Trends: Forced Displacement in 2017. 14th Edition, 2018. Accessed at: <https://www.unhcr.org/globaltrends2017>

7 UNAIDS. 2021. Young people and HIV.

8 UNAIDS. 2021. Global HIV & AIDS statistics. Fact sheet. <https://www.unaids.org/en/resources/fact-sheet>

9 UNICEF. 2020b. Adolescent HIV prevention. Retrieved from <https://data.unicef.org/topic/hivaids/adolescents-young-people/>

COME TOGETHER



QUALITY SRHR FOR EVERYONE, EVERYWHERE, THROUGH BARRIERS

IPPF is a global Federation of SRHR organisations.
We are radically committed to social and gender justice.
We provide care and promote choice.

SPECIAL DELIVERY



Expand Choice

Broaden Access

Further Reach

MOVE THE SEXUALITY AGENDA



Rooting Advocacy

Shift Norms

Youth Action

SOLIDARITY FOR CHANGE



Strategic Partnerships

Social Movements

Share Knowledge

IN OUR SKIN



Chart our Identity

Grow the Federation

Walk the Talk

Special Delivery

Goal: Quality and trusted care to more people, in more places

Care is about health. It is about justice. It is about freedom. Between us, we deliver care in all contexts, and we deliver the full spectrum of SRHR. Care is our greatest asset and contribution. We are invested in the health and progress of our countries. Our care is deeply embedded in the communities we come from and that we live in.

Our care is comprehensive, but we can do more. In the next six years, we will expand choice and reach more people, in more places. We want to support the full spectrum of sexuality and reproduction, and to honour people's choices along the course of their lives, in their diversity. We want to reach through barriers to reach those who are most excluded or marginalised. We will continue to deliver along the SRHR continuum, focusing on need and offering choice. In addition, we will follow three critical pathways to meet our goal.

Expand Choice

We believe that care is better when it is tailored to people and their needs. Choice leads to better health outcomes and wellbeing. We will work to improve our quality of care and to expand our offer. We will go further on provision of fertility and abortion services, we will integrate HIV and SRHR, and provide person-centred care with a life-cycle approach.

Broaden Access

IPPF reaches far. We work in our countries and within our communities. But we can reach more people. All over the world, systemic barriers hinder access to care and rights. We must do all we can to broaden access, and to reach people who are excluded and marginalised, through barriers. We will go further, also, to cater for youth and to deliver youth-centred care. In an increasingly unstable work, we will stand ready to deliver in crisis settings.

Further Reach

To reach further, we will make the most of new technologies and digital platforms. We must use this strategy to lay a foundation for the future of care. We will invest more in digital health interventions. We will promote self-care options that give people the resources they need to take care into their own hands. We will boost our reach by using digital platforms and channels to share information and resources with those we support.

Critical pathways

EXPAND CHOICE

LARGER ABORTION &
FERTILITY FOOTPRINT

ACCELERATE HIV
INTEGRATION

PERSON-CENTRED CARE

BROADEN ACCESS

CRISIS SETTINGS
YOUTH-CENTRED CARE

REACHING THROUGH
BARRIERS

FURTHER REACH

DIGITAL HEALTH
INTERVENTIONS

SELF-CARE

Move the Sexuality Agenda

Goal: Societal and legislative change for safe abortion, CSE and sexual rights

IPPF supports progressive societal and legislative change. We speak out on social justice. We challenge norms, in our societies or in international forums. We are unwavering in our commitment to sexual and reproductive rights.

In the next six years, we will double-down on advancing progressive laws and policies. We will challenge norms and realise youth-led action. We will no longer respond to the opposition. We will ask them to respond to us, and our partners. We will invite dialogue and look for common ground. We will address gender disparity, inequality and injustice using all the tools that we possess. We will work across spaces and levels, with partners, allies, and governments.

Rooting Advocacy

Global policy shifts should be felt where people are, and global policy should be informed by lived realities. IPPF is rooted in communities all over the world. We are well placed to strengthen the links between local, regional, and global advocacy spaces. We want to create spaces and opportunities for all levels to engage. We want to work closer with communities and partners to track and monitor progress, and work with our governments to deliver on commitments.

Shifting Norms

Progressive political and legislative change must be accompanied by changes in social norms. They are two sides of the same coin. Challenging colonial, divisive or discriminatory norms is key to bettering our world. In the next six years, we will better link our advocacy, communications, and community activism. Working with our partners, we will focus on changing social and gender norms to tackle structural injustice. We will engage in dialogue across political divides, holding true to our principles and our dedication. We will use big data and social listening to reach more people with winning narratives through platforms they use. We will work to move from patriarchy to gender freedom.

Youth Action

Young people are key drivers of change, in IPPF and in the world around us. We will increase our support for youth activism in IPPF. Youth should be at the forefront of our advocacy and outreach. We want to go further on Comprehensive Sexuality Education, expanding best practice and building the legal frameworks. We want to explore new avenues, such as partnering with influencers and improving the quality of sexuality communication and information on social media.

Critical Pathways

ROOTING ADVOCACY

CONNECTING LEVELS
COMMUNITY VOICES
CSO ALLIANCES &
RESULTS MONITORING

SHIFT NORMS

SGBV AND
GENDER NORMS
MALLEABLE MIDDLE
DIALOGUE & ACTION
BIG DATA, SOCIAL
LISTENING & NEW
NARRATIVES

YOUTH ACTION

YOUTH VOICES TO
THE FORE
EXTEND BEST PRACTICE
CSE
SOCIAL MEDIA
ENGAGEMENT

Solidarity for Change

Goal: Amplify impact by building bridges, shaping discourse, and connecting communities, movements and sectors

The problems faced in the world are too many and too complex for one actor or sector to address alone or in isolation. Only through global solidarity can we hope to persevere. The SDGs and, in the world of health, UHC, highlight that our mission is horizontally connected. IPPF forms part of an extensive systems of organisations and networks, at all levels. All working to make the world better. In the next six years, we will invest in building bridges and forging links towards a global compact on SRHR. We will pull together, and see beyond differences, to hold common objectives. We will work to foster solidarity for change.

Partnerships and Alliances

IPPF does not exist in a vacuum. We depend on our partners and allies. In the next six years, we will invest in collaboration to strengthen our delivery and advocacy efforts. IPPF will partner up, build consortia and expand alliances to meet unmet needs. We facilitate the client journey by improving referrals and choice. We will work across sectors for the common good. Challenging power and opposing injustice by building from our collective strengths. We will expand collaboration and work with consortia inside and outside of the Federation.

Social Movements

Faced with growing inequality and injustice, thousands of social movements are emerging, using new means of connecting, organising, and expanding their influence and impacts. Women's movements are challenging patriarchal structures and gender inequality all over the world. In the next six years, IPPF will actively support, fund, and connect social justice movements. We will not claim spaces but join collective efforts and amplify messages to push forward human rights and tackle inequalities. We will do so at all levels of the Federation.

Share Knowledge

The power of knowledge lies in sharing it. IPPF holds a wealth of data, research and insights. We will invest in sharing what we know with the rest of the world. We will further the reach of the IPPF Centers of Knowledge and Practice. We will stimulate dialogue and discourse around the issues we work on. We will use technology to connect and incubate ideas and new tech. We will learn from others and find ideas wherever they are.

Critical Pathways

STRATEGIC PARTNERSHIPS

INTER & CROSS SECTOR
ALLIANCES

IPPF & EXTERNAL
CONSORTIA

CLIENT JOURNEY
THROUGH PLANNED
REFERRALS

SOCIAL MOVEMENTS

MAP & RESEARCH

SUPPORT & FUND

CONNECT & AMPLIFY

SHARE KNOWLEDGE

DEEPEN FEDERATION
KNOWLEDGE & LEARNINGS

EXPAND SPACES FOR
CROSS-POLLINATION
OF IDEAS

TECH CONNECT & INCUBATE

In Our Skin

Goal: Renew our charter, live our ideals, and unleash our collective power

Formed by eight courageous national family planning organisations, IPPF has grown in size and impact. We have delivered our mission and left a mark on the world. Collectively, we work in more than 140 countries. Our federation bridges a broad array of social, cultural and political experiences and perspectives. We can be unwieldy and sometimes even divergent. But that is the source of our power, our energy.

Over the next six years, our Federation will adapt to a changing world. We will continue to modernise and streamline. We will re-examine and reaffirm our values and assumptions. We will refine our look and feel to be seen widely and in the right places. We will find more kindred spirits to join the Federation. We will introspect and improve our policies and action to make sure we walk our talk. We will be ready to change our future.

Chart our Identity

We want to renew our commitment to the Federation and reconnect with our common values. We will develop, jointly, a new Membership Charter. It will lay out the values that we hold in common and the ethos that drives us forward. We will renew our brand and better signal who, collectively, we are. We will be one federation, with members at the heart, channelling international solidarity together.

Grow the Federation

As a federation, the number of members expands and contract. In the next strategic period, we will grow and in the right places. We will seek new members, adding skills, ideas and reach. We will continue to modernise our systems, structures and governance. We will streamline and build efficiencies. We will invest in sustainability and social enterprise, moving from ambition to action.

Get our House in Order

Our federation will live by the values we hold. We remain deeply committed to addressing the interconnected forms of discrimination within IPPF and beyond. Our federation will continue to push for gender equality and respect for sexual diversity. Embedding intersectional and gender-transformative approaches in the way we work. Youth remain at the heart of our federation. We will continue to move away from tokenism and push forward their meaningful participation.

Critical Pathways

CHART OUR IDENTITY

MEMBERSHIP CHARTER

RENEWED BRAND

REINFORCE OUR
ONE-FEDERATION
CULTURE

GROW THE FEDERATION

NEW MEMBERS

ADVANCE SYSTEMS,
EFFICIENCIES, &
SUSTAINABILITY

GOVERNANCE REFORMS

WALK THE TALK

ANTI-DISCRIMINATION

GENDER &
SEXUAL DIVERISTY

YOUTH AT THE CENTRE

COME TOGETHER

QUALITY SRHR FOR EVERYONE, EVERYWHERE, THROUGH BARRIERS

IPPF is a global Federation of SRHR organisations. We are radically committed to social and gender justice. We provide care and promote choice.

SPECIAL DELIVERY

Expand Choice

- Larger abortion & fertility footprint
- Accelerate HIV integration
- Person-centred care

Broaden Access

- Crisis settings
- Youth-centred care
- Reaching through barriers

Further Reach

- Digital health interventions
- Self-care

MOVE THE SEXUALITY AGENDA

Rooting Advocacy

- Connecting levels
- Community voices
- CSO alliances & results monitoring

Shift Norms

- SGBV and gender norms
- Malleable middle dialogue & action
- Big data, social listening & new narratives

Youth Action

- Youth voices to the fore
- Extend best practise CSE
- Social media engagement

SOLIDARITY FOR CHANGE

Strategic Partnerships

- Inter & cross sector alliances
- IPPF & external consortia
- Client journey through planned referrals

Social Movements

- Map & research
- Support & fund
- Connect & amplify

Share Knowledge

- Defend federation knowledge & learnings
- Expand spaces for cross-pollination of ideas
- Tech connect & incubate

IN OUR SKIN

Chart our Identity

- Membership charter
- Renewed brand
- Reinforce our one-federation culture

Grow the Federation

- New members
- Advance systems, efficiencies, & sustainability
- Governance reforms

Walk the Talk

- Anti-discrimination
- Gender & sexual diversity
- Youth at the centre

COME TOGETHER

QUALITY SRHR FOR EVERYONE, EVERYWHERE, THROUGH BARRIERS

IPPF is a global Federation of SRHR organisations.
We are radically committed to social and gender justice.
We provide care and promote choice.

SPECIAL DELIVERY

Expand Choice

Broaden Access

Further Reach

MOVE THE SEXUALITY AGENDA

Rooting Advocacy

Shift Norms

Youth Action

SOLIDARITY FOR CHANGE

Strategic Partnerships

Social Movements

Share Knowledge

IN OUR SKIN

Chart our Identity

Grow the Federation

Walk the Talk

COME TOGETHER

QUALITY SRHR FOR EVERYONE, EVERYWHERE, THROUGH BARRIERS

IPPF is a global Federation of SRHR organisations. We are radically committed to social and gender justice. We provide care and promote choice.

SPECIAL DELIVERY

Expand Choice

- Larger abortion & fertility footprint
- Accelerate HIV integration
- Person-centred care

Broaden Access

- Crisis settings
- Youth-centred care
- Reaching through barriers

Further Reach

- Digital health interventions
- Self-care

MOVE THE SEXUALITY AGENDA

Rooting Advocacy

- Connecting levels
- Community voices
- CSO alliances & results monitoring

Shift Norms

- SGBV and gender norms
- Malleable middle dialogue & action
- Big data, social listening & new narratives

Youth Action

- Youth voices to the fore
- Extend best practise CSE
- Social media engagement

SOLIDARITY FOR CHANGE

Strategic Partnerships

- Inter & cross sector alliances
- IPPF & external consortia
- Client journey through planned referrals

Social Movements

- Map & research
- Support & fund
- Connect & amplify

Share Knowledge

- Defend federation knowledge & learnings
- Expand spaces for cross-pollination of ideas
- Tech connect & incubate

IN OUR SKIN

Chart our Identity

- Membership charter
- Renewed brand
- Reinforce our one-federation culture

Grow the Federation

- New members
- Advance systems, efficiencies, & sustainability
- Governance reforms

Walk the Talk

- Anti-discrimination
- Gender & sexual diversity
- Youth at the centre

COME TOGETHER

QUALITY SRHR FOR EVERYONE, EVERYWHERE, THROUGH BARRIERS

IPPF is a global Federation of SRHR organisations. We are radically committed to social and gender justice. We provide care and promote choice.

SPECIAL DELIVERY

Expand Choice

Broaden Access

Further Reach

MOVE THE SEXUALITY AGENDA

Rooting Advocacy

Shift Norms

Youth Action

SOLIDARITY FOR CHANGE

Strategic Partnerships

Social Movements

Share Knowledge

IN OUR SKIN

Chart our Identity

Grow the Federation

Walk the Talk

COME TOGETHER

QUALITY SRHR FOR EVERYONE, EVERYWHERE, THROUGH BARRIERS

IPPF is a global Federation of SRHR organisations. We are radically committed to social and gender justice. We provide care and promote choice.

SPECIAL DELIVERY

Expand Choice

- Larger abortion & fertility footprint
- Accelerate HIV integration
- Person-centred care

Broaden Access

- Crisis settings
- Youth-centred care
- Reaching through barriers

Further Reach

- Digital health interventions
- Self-care

MOVE THE SEXUALITY AGENDA

Rooting Advocacy

- Connecting levels
- Community voices
- CSO alliances & results monitoring

Shift Norms

- SGBV and gender norms
- Malleable middle dialogue & action
- Big data, social listening & new narratives

Youth Action

- Youth voices to the fore
- Extend best practise CSE
- Social media engagement

SOLIDARITY FOR CHANGE

Strategic Partnerships

- Inter & cross sector alliances
- IPPF & external consortia
- Client journey through planned referrals

Social Movements

- Map & research
- Support & fund
- Connect & amplify

Share Knowledge

- Defend federation knowledge & learnings
- Expand spaces for cross-pollination of ideas
- Tech connect & incubate

IN OUR SKIN

Chart our Identity

- Membership charter
- Renewed brand
- Reinforce our one-federation culture

Grow the Federation

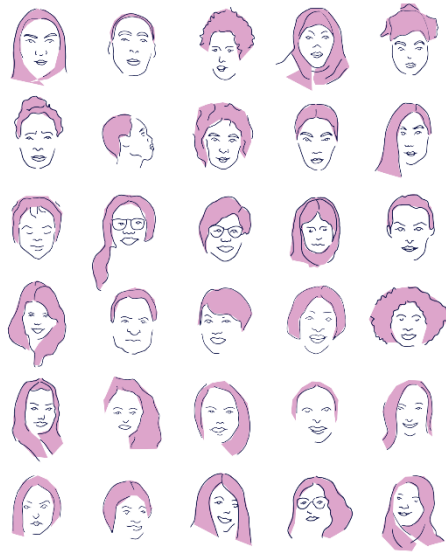
- New members
- Advance systems, efficiencies, & sustainability
- Governance reforms

Walk the Talk

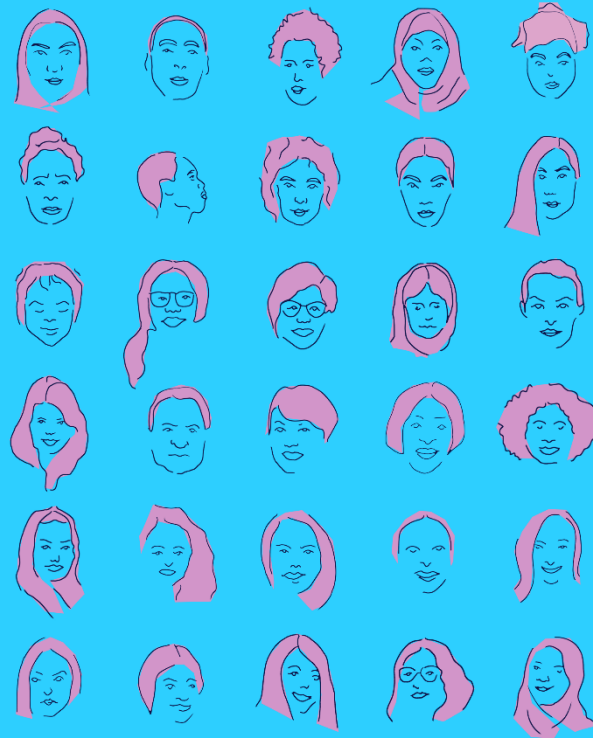
- Anti-discrimination
- Gender & sexual diversity
- Youth at the centre



COME TOGETHER STRATEGY 2022-2028



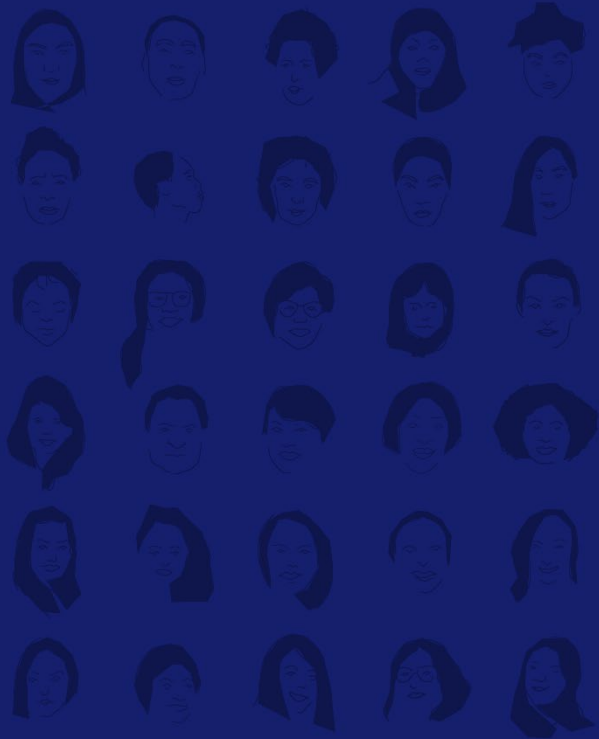
COME TOGETHER STRATEGY 2022-2028





COME TOGETHER

STRATEGY 2022-2028



COME TOGETHER

STRATEGY 2022-2028



