

Board of Trustees  
29 September 2022

Refers to  
agenda item 4

### **Agenda Item: STRATEGY 2028 RESULTS FRAMEWORK**

**Summary:** The draft results framework (RF) includes 12 quantitative and qualitative indicators against the 4 strategic pillars and 12 critical pathways. It was developed to reflect the commitments made in IPPF's new Strategy through an ongoing extensive consultative process which has included MAs (70 responses from 62 MAs who responded to the survey), Secretariat and donors so far. 262 representatives from MAs/CPs and Secretariat attended webinars and donor engagement is still in process.

This RF is a departure from past strategic results frameworks in many ways. It includes research and impact studies, client-based data, mapping exercises and youth-led studies, as well as a segmented approach to data collection and reporting whereby not all MAs/CPs will be required to report against all indicators to acknowledge that, in a diverse Federation like IPPF, one size does not fit all.

While recognizing the Strategy includes 33 commitments, there was a consensus to keep the number of indicators to a manageable level, allowing a clear focus on specific areas of priority in the new Strategy (the pathways) while still collecting data routinely available at MAs. We will therefore continue to track data on number of services, number of clients disaggregated by age/gender, contraceptive items distributed (which will allow the computation of Couple Years Protection-CYP) and number of young people reached with Comprehensive Sexuality Education (CSE).

In addition, MAs/CPs will continue to collect data required for their local context and/or restricted funding commitments.

**Action Required:**

- The Board to note and support the attached draft Results Framework (2023-28) based on feedback received so far.

## Proposed Results Framework (2023-2028):

### I. Centre Care on People

- *Expand Choice - Widen access - Advance Digital AND Self-Care*

#### Indicators

1. Proportion of [service providing] MAs/CPs providing IPES-plus AND meeting quality standards.
2. Number of clients served by type of services and model of care (including Digital Health Interventions (DHIs), facilitated self-care) with focus on adolescents and young people, people in humanitarian settings and other marginalized and excluded people.
3. Number of services provided by type of services and model of care (including DHIs, facilitated self-care) with focus on adolescents and young people, people in humanitarian settings and other marginalized and excluded people
4. Aggregated proportion of MAs'/CPs' contribution to the national SRH services provided in their countries.

*Currently, IPPF's Integrated Package of Essential Services (IPES) includes eight components: Counselling, Contraception, Safe abortion care, STIs/RTIs, HIV, Gynaecology, Obstetrics and prevention of Gender-based violence. The IPES will be revisited following the approval of the new Strategy to reflect additional/new services and models of care.*

*We will continue to track data on number of ALL services, number of ALL clients disaggregated by age, gender, types of SRH service provided, number of young people reached with CSE, and items distributed (for CYP).*

*Indicator 4 will be collected from a sample of representative MAs/CPs.*

### II. Move the Sexuality Agenda

- *Ground Advocacy - Shift Norms - Act with Youth*

#### Indicators

5. Number of **successful policy initiatives** and/or legislative changes in support or defence of SRHR
6. Changes in support of **gender equality and inclusion** in the Federation
7. Quality, reach and impact of CSE, **youth-centred care**, and progress in **youth engagement** in the Federation

*Indicator 5 is already collected and includes global, regional and national advocacy wins.*

*Research and Impact studies proposed in Indicators 6 & 7 will be conducted at least twice or 3 times at the start, mid-point and end of the Strategy period.*

*The Terms of Reference and research questions will be formulated ahead of the study.*

### III. Solidarity for Change

- *Support Social Movements - Strategic partnership - Innovate & share Knowledge*

#### Indicators

8. IPPF's contribution in **supporting social movements** and defending activists
9. Number of intra- and inter-sector **campaigns delivered by the federation** in support or defence of SRHR, through a diversity and decolonization lens

**10. Proportion of research and evidence initiatives generated by MA-led centres of learning that are from the global south**

*The Terms of Reference and research questions will be developed through cross-federation consultation.*

## IV. Nurture Our Federation

- *Chart Our Identity - Grow Our Federation Walk The Talk*

### Indicators

**11. Overall Secretariat Efficiency Score** (See table below for details)

**12. Secretariat Accountability Mechanism (SAM) score**

*Indicator 11 will be DLT-assessed*

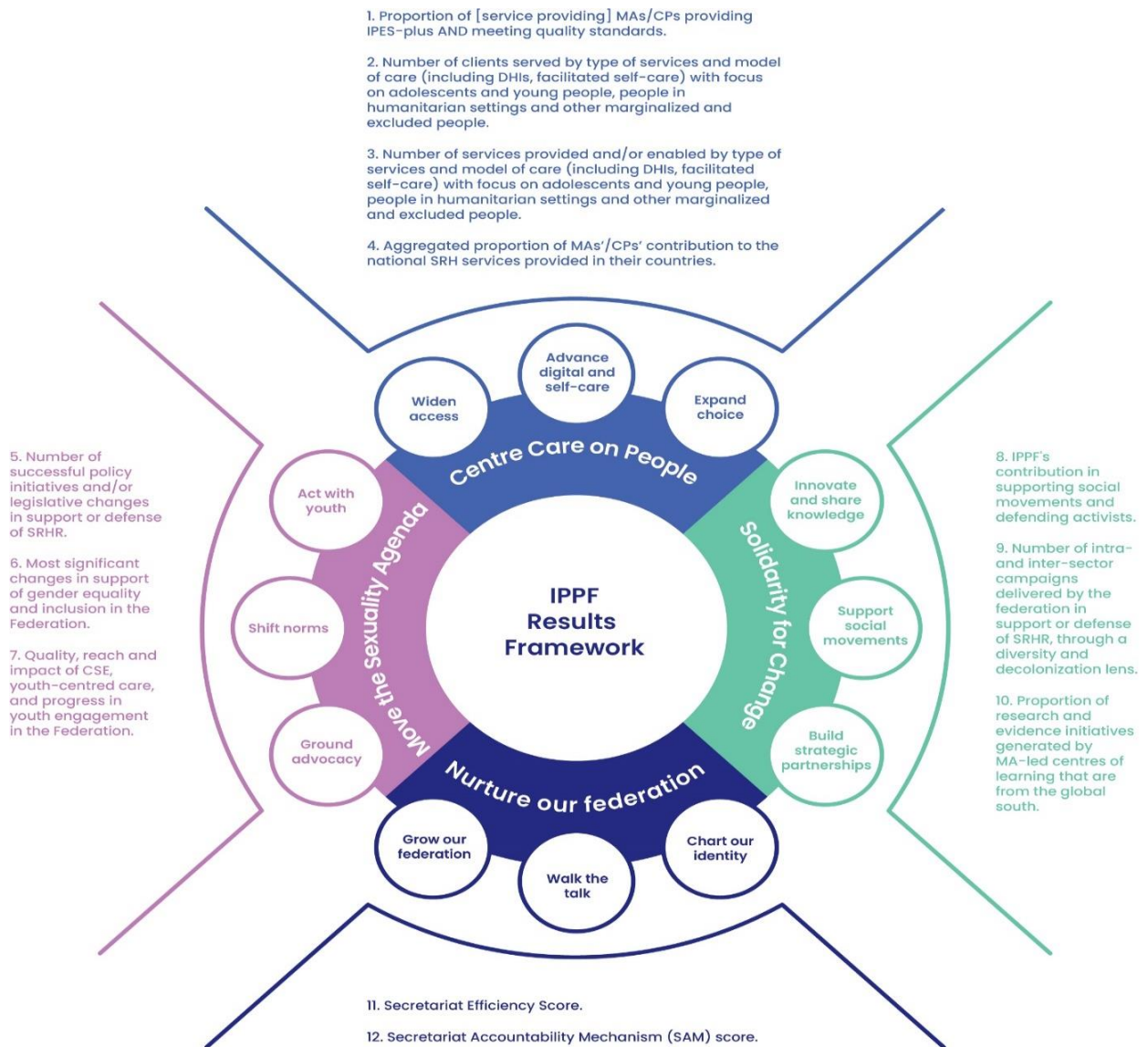
*Indicator 12 will be MA-assessed*

### Secretariat Efficiency Score – Sub-components

For indicator 11, a 10-component efficiency score that includes improvement in our footprint, systems strengthening (IT, HR, Finance, Data), learning, resource mobilization and progress in our anti-racism and anti-discrimination programme of action with a 3-point scoring. Possible score range will be from -10 to +10, aiming for 10 by 2028.

	<b>Proposed components</b>	<b>Decreased/ worsened</b>	<b>Remained same</b>	<b>Increased/ improved</b>
1	Total number of MAs or CPs in top 25 countries with lowest Human Development Index/ SRHR unmet need	-1	0	1
2	HR systems strengthening	-1	0	1
3	Finance systems strengthening	-1	0	1
4	IT systems strengthening	-1	0	1
5	Data management systems strengthening	-1	0	1
6	Learning systems strengthening	-1	0	1
7	Proportion of MAs/CPs with 80% or more static clinics with Clinic Management Information Systems including client-based electronic health records	-1	0	1
8	Proportion MAs/CPs receiving less than 50% of their income from one single donor	-1	0	1
9	Overall financial resource mobilized	-1	0	1
10	Progress in anti-racism and anti-discrimination programme of action	-1	0	1

## ANNEX: Results Framework Diagram



\* IPPF Integrated Package of Essential Services (IPES) will be revisited to reflect additional priority services such as infertility care, services provided to adolescents etc.  
 \*\*Quality standards and revision of SGBV components to be informed by the ongoing discussion with the Secretariat and MA colleagues  
 \*\*\* 10 component growth score proposed that include improvement in MA base, Systems strengthening (IT, HR, Finance, Data), learning and resource mobilization. TBC.