


International Masters Program for Managers

 Lancaster	 McGill	 IIMB	 YNU	 EBAPE
--	---	---	--	--

Transforming Organizations

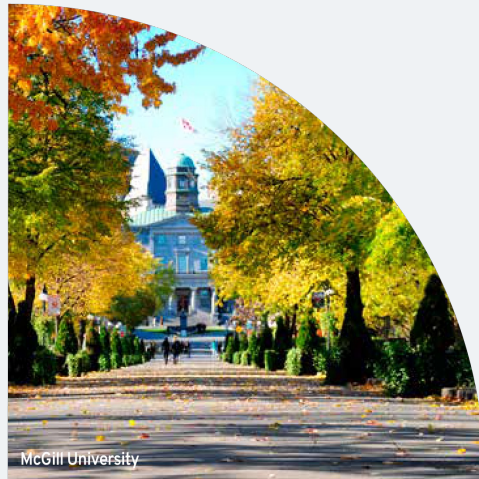
Around the world for over 25 years



IMPM Overview

The #1 International Executive Management Program*

- International Executive Management Diploma/Certificate (12 months) and an international executive **Masters in Management Degree** (+3 months) from McGill, Lancaster, or FGV-EBAPE.
- Equivalent to a Global **Executive MBA**, but more practical and strategic:
 - Focused on strategic thinking, complex decision-making and immediate impact.
 - Each module is designed and delivered by a different university/profs/country.
- **5 innovative and integrated** “mindset-based” modules (10 days each), 5 top universities, 5 countries.
- Extremely **diverse** and experienced participants and professors (industries, sectors, countries, cultures, gender, experiences).
- Will **transform** your practice of management through peer and action learning. And a unique Managerial exchange.
- Highly **customizable and impactful**: curriculum and assignments are designed to address your specific organizational challenges.

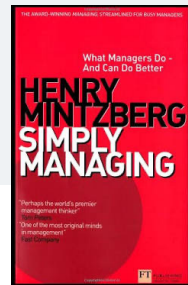
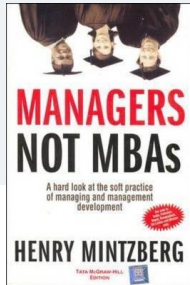
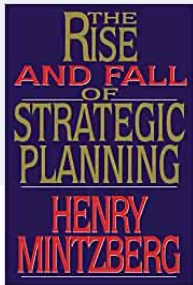




Founded by World-renowned Prof. Henry Mintzberg

“Leadership is Management with Lasting Impact”

- 25 Books, 25 Honorary Doctorates and 200 articles on management and strategy
- Father of “emergent strategy” – strategy through action, reflection and creativity
- Designed IMPM to address short-comings of traditional siloed/functional MBA and EMBA programs
- Management is a practice that can be enhanced by integrating business functions, and adopting a peer-learning and action-learning approach



[See Prof. Mintzberg's Biographical Video](#)

A Truly Global Program

5 Modules
Mindsets
Business Schools
Countries
Worlds



[Watch a 5 minutes video of the IMPM](#)

Delivered by Top Universities

The Best Management Professors in the World

1



Lancaster University Management School UK

#1 UK Business School for Research Power REF2022
World Top #27 Research.com 2023

2



McGill University Canada

#1 (Medical-Doctoral) University in Canada Macleans 2022
World Top #31 QS World Rankings 2023

3



Indian Institute of Management Bangalore India

#1 Business School in India QS World Ranking 2022
World Top #50 QS World Rankings 2023

4



Yokohama National University Japan

#2 Nikkei Japan HR Employment Ranking 2022
#26 Times Higher Japan 2022

5



FGV-EBAPE Brazil

#1 School of Administration in Brazil
#1 MBA in Latin America
World Top #3 2023 Global Think Tank Index

Integrate your Organizational Challenges

A Customized Learning Journey

Personal tutors and mentors help each participant personalize and maximize their learning journey.



Managerial Exchange

You will follow another participant from a different country and industry in their workplace, and they will observe you in your organization. This can transform the way you lead and manage.



Peer Consulting

You will share your work challenges with your peers as they relate to the topics covered in class. This "friendly consulting" can lead to creative new ideas and strategies.



Company Visits

You will visit organizations from various sectors, to learn about different business models in the unique context of that particular culture. This will open your mind to new ways of thinking.



Reflection Papers

After each module, you will write a reflection paper outlining how you will apply what you learned to your organization. This allows you to integrate your work into the program.



Impact Teams

You will implement improvement projects with your team, based on what you learn in class. This allows you to have an immediate impact on your organization.

Immediate ROI for your Organization

Multiple Participants over Several Years from:



10-45 IMPM graduates are in senior positions at
Lufthansa, LG, Fujitsu, Panasonic, POSCO, Brazilian Development Bank, Kenya Red Cross

Benefits to your Organization

PART I

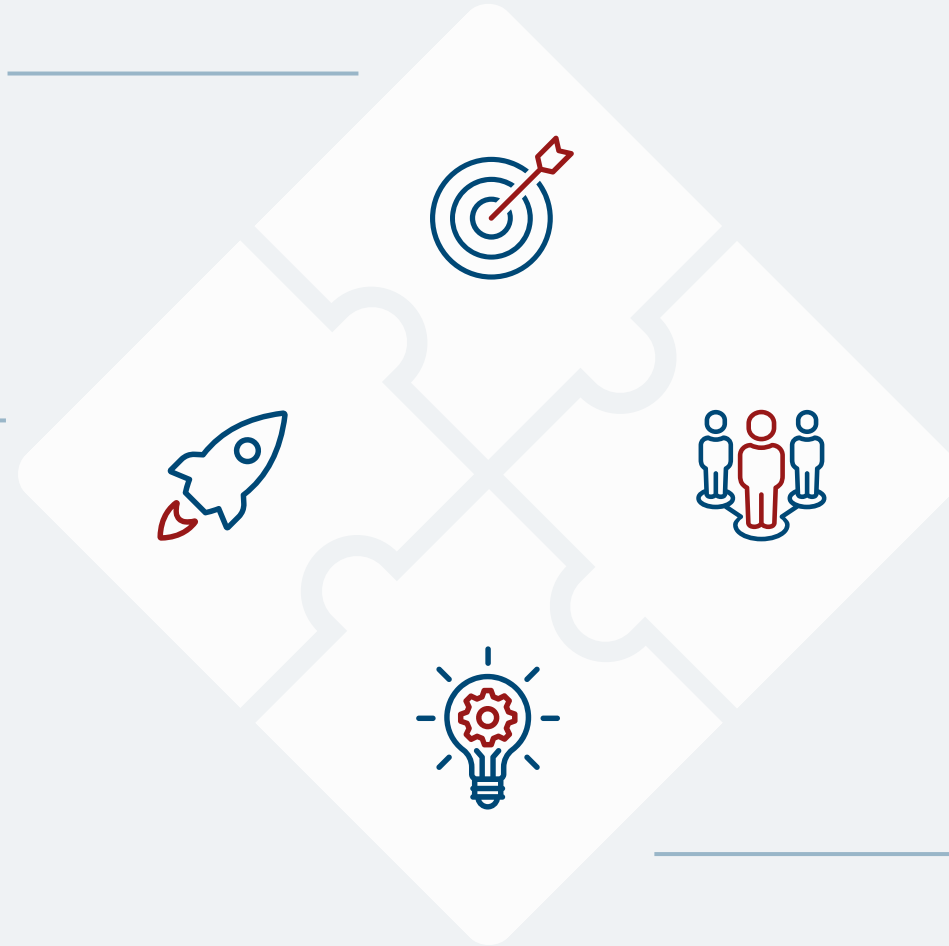
Why you should support IMPM Participants

The learning and assignments are **customizable to your organization's strategic objectives** and specific challenges.

- ✓ Assurance that your strategies are the best they can be.

We go beyond a traditional global (functional) EMBA. Focus on strategic decision-making, innovation and **immediate organizational impact**.

- ✓ Better decisions vetted by experts and supported by diverse managerial experience.



Each participant is expected to positively **impact their business unit and organization** by putting learning into practice throughout program.

- ✓ Management equipped and focused on the mission-critical issues of your organization.

The innovate management development "mindset-based" approach creates **lasting impact and ROI** through action and peer-learning learning.

- ✓ Avoid analysis/paralysis. Incorporate the best concepts and practices into an integrated approach to actual challenges for your organization.

Benefits to your Organization

PART II

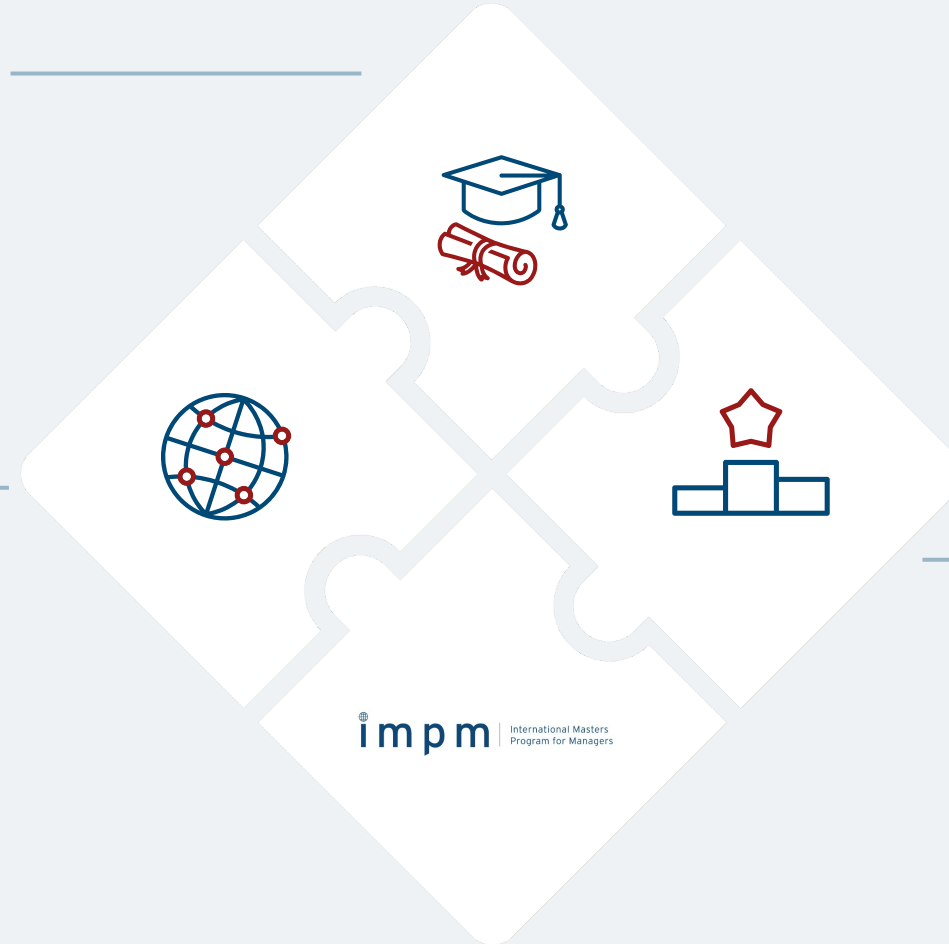
Why you should support IMPM Participants

No other program is delivered by **50+ faculty from 5 top universities in 5 countries**, at the cusp of management research and education.

- ✓ Ready access to a diverse array of scholars, mentors and practitioners from around the world providing insight into fresh opportunities, markets, practices and strategies.

No other program has such **accomplished peers** from so many different sectors and countries around the world.

- ✓ Tap into a network of seasoned practitioners from various fields offering unique perspectives to enrich your thinking.



Your IMPM participant(s) will **help your organization succeed** expand perspectives, innovate, manage change and solve complex problems.

- ✓ Your IMPM participant(s) will prompt your organization to expand perspectives, innovate, manage change and solve complex problems.

A Transformative Experience

IMPM Alumni Confirm its Impact on their Organization

100%

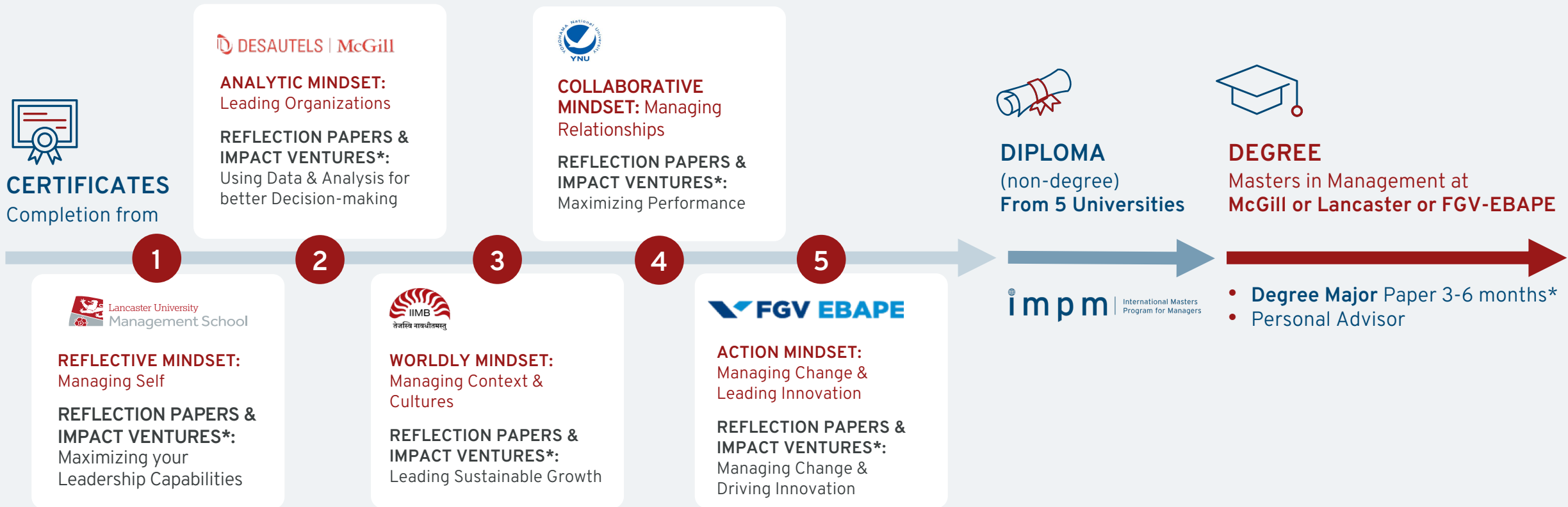
Recommend the Program

- ✓ **Transformed** their personal and professional life
- ✓ Positively **impacted** their role as a manager, their organization and their community
- ✓ Is a **highly international** experience
- ✓ Helped them **reach professional goals**
- ✓ Professors are **leading-edge**
- ✓ Company visits and guest speakers are **highly relevant**
- ✓ Peers are **highly experienced** and contribute to the learning



Program Overview and Design

A Customizable Learning Journey focused on Impact



- Digital Learning Platform for Peer Learning & Friendly Consulting
- Personal Tutor

*(Customizable to each Participant/Organization)



Unique “Mindset” Approach

Builds Effective Leaders and Strategy for the Organization

- Senior managers need to face juxtapositions to arrive at a deep integration of seemingly contradictory concerns. Bringing silos in the organization to work together toward common goals.
- Managers must focus not only on what they need to accomplish but also on how to think differently (“managerial mind-sets”)
- IMPM’s uniquely integrated “mindset” modules encourage synthesis rather than separation.



Lancaster University
Management School



Reflective Mindset: Managing Self

*Build and enhance the effectiveness of your organization's leaders and future leaders to **maximize performance** through reflective thinking, practical wisdom, and engaged managing.*

Topics include:

- The power of reflection and appreciative inquiry for creative problem solving/better decisions
- Understanding your and others leadership styles
- Managing paradoxes in business
- Managing and leading change and innovation
- Maximizing organizational performance through effective leadership and engaged management
- Ethical, value and purpose-based management



Analytic Mindset: Managing Organizations

*Develop your organization's capability for strategic analysis, to **make better decisions** and solve complex problems.*

Topics include:

- Analysing organizations and strategic thinking
- Making strategic decisions through big data collection and analytics
- Using managerial finance and accounting for informed decision-making
- Understanding macro-economic, industry dynamics to inform corporate strategy and mitigate risk
- Implications and potential of artificial intelligence
- Building strategies for sustainability
- Understanding and fostering an effective organizational culture



Worldly Mindset: Managing Context

*Help your organization **see the bigger picture**, develop exceptional value and new markets for a better, more sustainable future within complex and changing market and non-market dynamics.*

Topics include:

- Developing an entrepreneurial mindset
- Creating effective marketing strategies in an international context
- Using diversity, equity and inclusion as a competitive advantage
- Maximizing operational efficiency, frugal innovation and scaling-up
- Clarifying the role of your organization in society and in the world
- Market and non-market dynamics



Collaborative Mindset: Managing Relationships

*Generate a collaborative culture in teams, cross-functional groups and alliances in and beyond your organization, to **create value** for your organization and society.*

Topics include:

- Developing cultural perspectives of collaboration (e.g. Kaizen and Sanpo Yoshi)
- Creating and managing knowledge
- Strategic collaboration: intergenerational, with ecosystems and through machine learning (AI)
- Being an effective collaborative manager
- Leading a human resource development strategy
- Managing global projects and cross-functional teams
- Negotiating effectively in different contexts & cultures
- Rebalancing the role of different types organizations and sectors in society



Action Mindset: Managing Change & Continuity

*Develop new capabilities for managing change, **lead innovation** and catalytic thinking by mobilizing the creativity and dynamism of communities in and beyond your organization toward action.*

Topics include:

- Developing an entrepreneurial mindset
- Managing and leading change in a complex, multi-polar and global environment
- Putting strategy into action
- Being the catalyst for innovation
- Communityship beyond leadership
- Mobilizing stakeholders toward action
- Creating strategies for a sustainable future

Learn from Experienced Peers

Selective Cohort of 30 Executives: Worldly, Diverse, International

Average Years of Management Experience

11

Countries Represented

13

21

Average Years of Work Experience

44

Average Age of Participants

Typical Professional Backgrounds

- CEOs, Managing Directors, Vice Presidents, senior managers, entrepreneurs
- All functions (general mgmt., finance, operations, marketing, HR, etc.),
- SMEs, Private companies, public companies, government, academia, NGOs

Join a Powerful Global Network

Highly Successful Alumni Transforming Organizations & Society



Dr. James Kisia

Executive Director, International Centre for Humanitarian Affairs Kenya

The IMPM has made me more at ease with my work and made it even more enjoyable. It is my fourth degree but the one that will have made the biggest difference in my work life.



Christina Foerster

Member of the Executive Board - Customer & Corporate Responsibility, Lufthansa Group, Germany

The IMPM made a lasting impact on my management practice overall. It has taught me the importance of listening and reflection, as well as the importance of taking a step back to question yourself, your approaches and your overall management style.



Ana Costa

Department Head, Consumer Goods, Commerce and Services, BNDES

The IMPM was one of the best experiences in my professional life. It showed me how to be more open-minded, reflexive and focused on action. To change what is needed and maintain what is relevant.



Salima Mohammed

MSc International Management, Kenya Red Cross

The friendly consulting provided me with an opportunity to get feedback on how to handle different scenarios which enabled me to grow not only professionally, but on a personal level too.

Program Schedule Cycle 25

Designed for Busy Executives

MODULE 1 – Sept 10-20, 2023

LANCASTER UNIVERSITY, LANCASTER, UK
REFLECTIVE MINDSET: Managing Self

MODULE 2 – Nov 19-29, 2023

MCGILL UNIVERSITY, MONTREAL, CANADA
ANALYTIC MINDSET: Managing Organizations

MODULE 3 – Jan 21-31, 2024

IIM BANGALORE, BANGALORE, INDIA
WORLDLY MINDSET: Managing Context

MODULE 4 – May 12-22, 2024

YOKOHAMA NATIONAL UNIVERSITY, YOKOHAMA, JAPAN
COLLABORATIVE MINDSET: Managing Relationships

MODULE 5 – Sept 8-18, 2024

FGV-EBAPE, RIO DE JANEIRO, BRAZIL
ACTION MINDSET: Managing Change

DEGREE MAJOR PAPER – Oct 2024 – Mar 2025

COMPLETED REMOTELY WITH MCGILL or LANCASTER or FGV
Masters Graduation May 2025



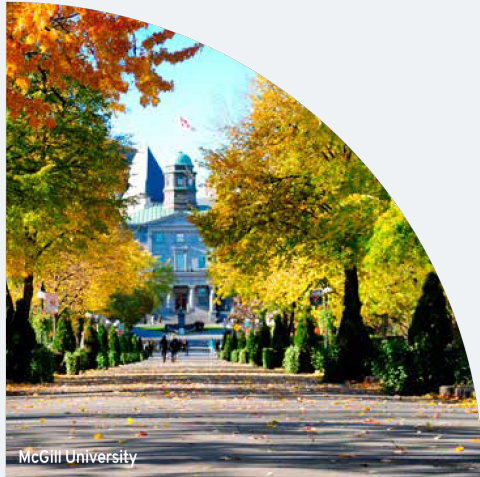
Lancaster University



IIM Bangalore



FGV EBAPE



McGill University



Yokohama National University

Next Steps

Selective Admissions & Accessible Tuition

- We aim to keep the program financially accessible. Our focus is on the quality of experience and values participants.
- For individuals in the private sector, tuition is US\$50,000.
EARLY BIRD TUITION US\$45,000 (Deposit paid before March 31, 2023)
- For individuals in government, NGOs, or academia tuition is US\$45,000.
EARLY BIRD TUITION US\$40,000 (Deposit paid before March 31, 2023)
- Tuition payments can be made in 5 separate installments during the course of 12 months
- DEGREE FEE \$C 11,000 for the degree at McGill University (Canada), £6400 for the degree at Lancaster University (UK) and \$USD 5,000 for the degree at FGV-EBAPE (Brazil) – **No travel required.** Conducted Remotely.
- **For organizations sending 2+ participants, we have exclusive rates.**
- Travel and lodging for the modules will be arranged and paid for by participants or the employer.
- Scholarships are available. Preference is given to those in financial need and who demonstrate the potential for positive impact on society and/or the environment.
- Send your CV to Minjin.ota@impm.org for pre-selection. Qualified candidates undertake two interviews and **complete the application.**



imp m

International Masters Program for Managers



Lancaster



McGill



तेजस्वि नावधीतमस्तु
IIMB



YNU



EBAPE

